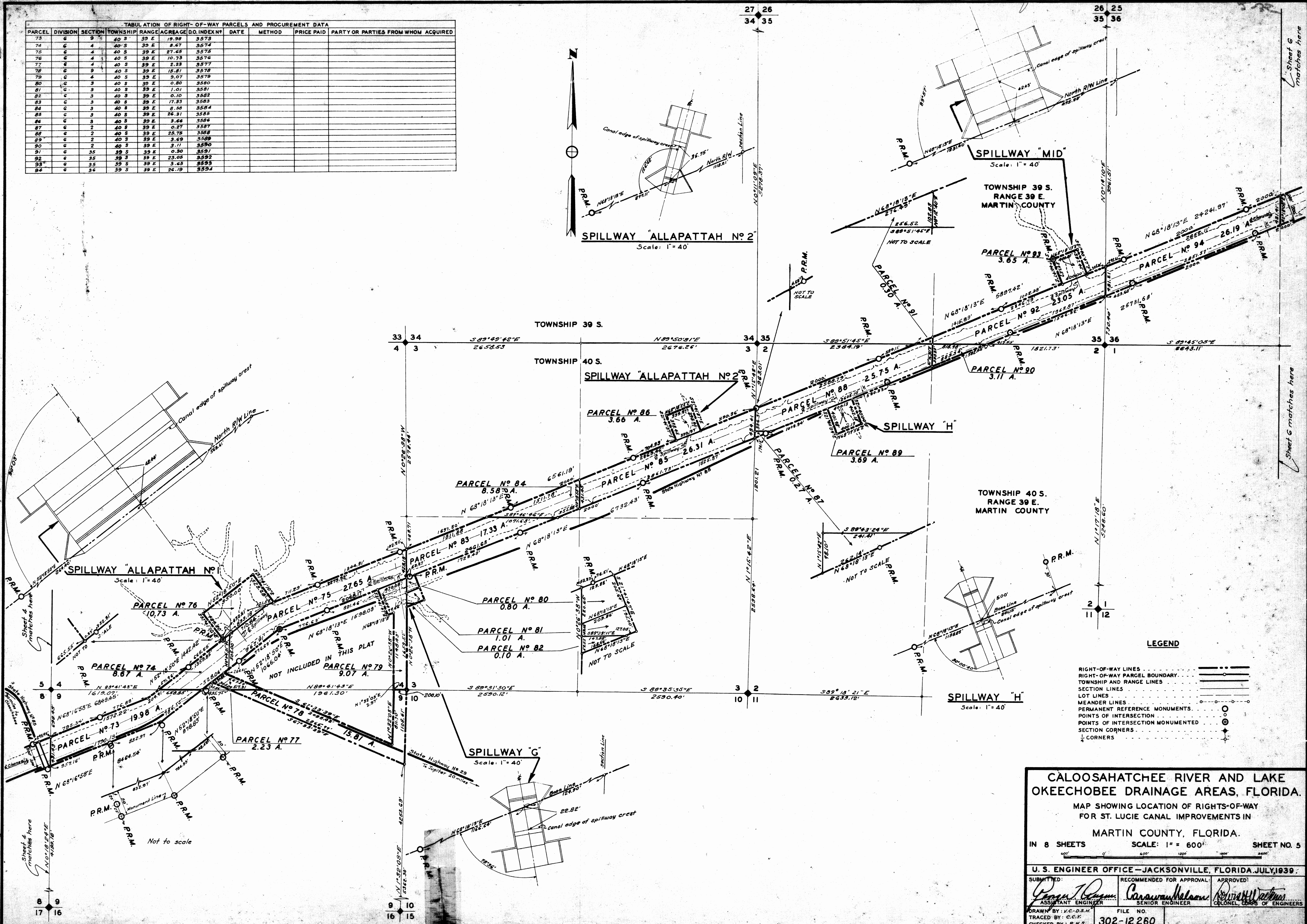


PARCEL	DIVISION	SECTION	TOWNSHIP	RANGE	ACRES	D.O. INDEX NO.	DATE	METHOD	PRICE PAID	PARTY OR PARTIES FROM WHOM ACQUIRED
73	C	4	40 S	39 E	19.39	3573				
74	C	4	40 S	39 E	8.67	3574				
75	C	4	40 S	39 E	27.65	3575				
76	C	4	40 S	39 E	10.73	3576				
77	C	4	40 S	39 E	2.23	3577				
78	C	4	40 S	39 E	18.81	3578				
79	C	4	40 S	39 E	9.07	3579				
80	C	3	40 S	39 E	0.80	3580				
81	C	3	40 S	39 E	1.01	3581				
82	C	3	40 S	39 E	0.10	3582				
83	C	3	40 S	39 E	17.33	3583				
84	C	3	40 S	39 E	8.58	3584				
85	C	3	40 S	39 E	26.31	3585				
86	C	3	40 S	39 E	3.66	3586				
87	C	2	40 S	39 E	0.27	3587				
88	C	2	40 S	39 E	25.75	3588				
89	C	2	40 S	39 E	3.69	3589				
90	C	2	40 S	39 E	3.11	3590				
91	C	35	39 S	39 E	0.30	3591				
92	C	35	39 S	39 E	23.05	3592				
93	C	35	39 S	39 E	3.45	3593				
94	C	36	39 S	39 E	26.19	3594				



CALOOSAHATCHEE RIVER AND LAKE OKEECHOBEE DRAINAGE AREAS, FLORIDA.
 MAP SHOWING LOCATION OF RIGHTS-OF-WAY FOR ST. LUCIE CANAL IMPROVEMENTS IN MARTIN COUNTY, FLORIDA.
 IN 8 SHEETS SCALE: 1" = 600' SHEET NO. 5

U. S. ENGINEER OFFICE - JACKSONVILLE, FLORIDA, JULY, 1939.

SUBMITTED: [Signature] ASSISTANT ENGINEER
 RECOMMENDED FOR APPROVAL: [Signature] SENIOR ENGINEER
 APPROVED: [Signature] COLONEL, CORPS OF ENGINEERS

DRAWN BY: V.C.O.S.H. FILE NO. 302-12,260
 TRACED BY: C.C.K.
 CHECKED BY: R.W.S.